



**collective**

The  
largest  
Distribution  
house  
for  
all kind of  
bearings



**EXCLUSIVE DISTRIBUTORS**

World  
best  
brands  
under  
ONE  
roof



AN ISO 9001-2008 COMPANY



AN ISO 9001-2008 COMPANY



# Profile

## "COLLECTIVENESS"

Every Business has a Soul :  
Something that you can't see, but feel. Our soul is the experience.

We started with a passion to change the experience of millions whose desire is to get quality bearings at best price.

Having started with a distinct perspective to improve the service standards, we have managed to retain the same reputation.

As a result of team work, aptitude for innovations and match-less infrastructure,.....we have created a new culture in the bearing trade :

## "COLLECTIVENESS"

### FLASHBACK

collective started business in 1980 with a burning desire to become an important player in the bearing business.

### MILE-STONES

Achieved market share up to 90 per cent while developing import substitutes. We are the first company to get ISO Certification in the segment.

### STRENGTH

State of the art Infrastructure. One of the best in country.

### SERVICES

#### Technology upgradation :

We bring to you the latest technology even before our competitors know about that.

#### Unique techno-commercial support :

We provide full technical support at no extra cost.

### PRODUCT RANGE

Collective offers a wide range of bearings.

From simple CI Plummer Blocks to sophisticated Linear Actuating systems.

0.5 mm bore dia miniature bearing to 7000 mm bore dia slewing rings.

All under one roof.

**COLLECTIVE** builds synergies in bearing procurements.

FEEL FREE TO ASK FOR DETAILED CATALOGUE ON ANY ITEM MENTIONED IN THIS BROCHURE



E-mail : [sales@collectivebearings.com](mailto:sales@collectivebearings.com)  
[info@collectivebearings.com](mailto:info@collectivebearings.com)

## DEEP GROOVE BALL BEARINGS

- ⦿ Bore Dia 10 mm to 150 mm
- ⦿ Bore Dia 150 mm to 1200 mm
- ⦿ Single Row & Double row radial bearings.
- ⦿ Large size ball bearings with internal dia more then 500 mm.
- ⦿ Slim Bearings.
- ⦿ Self Aligning ball bearings.
- ⦿ Single and double row angular contact ball bearings.



## HIGH PRECISION MINIATURE BEARINGS

- ⦿ Extra thin type
- ⦿ Flanged
- ⦿ Stainless
- ⦿ Bore dia 0.5 mm to 10 mm.
- ⦿ Steel ribbon type-Steel crown type-Nylon crown type
- ⦿ Steel rivet type-Full complement-Thrust FM type-Thrust F type
- ⦿ Thrust with and without raceway-With extended inner ring
- ⦿ With extended inner ring and flange-Special extra thin

### SEALS AND SHIELDS -Teflon Seal with Snap Ring

- ⦿ Steel shield with snap ring-Pressed steel shield
- ⦿ Contact rubber seal-Non-contact rubber seal

### TOLERANCE CLASSES-ABEC1-ABEC3-ABEC5P-ABEC7P

BEARING TYPE : Metric standard & Inch



## SUPER PRECISION BEARINGS

- ⦿ Angular Contact Match Pairs,
- ⦿ Sets of 3, Qua duplex 3C
- ⦿ Ball Screw Supports
- ⦿ Precision Radial Ball Bearings
- ⦿ Precision Cylindrical Roller Bearings



## CYLINDRICAL ROLLER BEARINGS

- Single row
- Double row
- Four row
- Hollow roller
- Precision
- Full Compliment bearings for heavy load caring capacity



## SPHERICAL ROLLER BEARINGS

- Regular bearings
- Hi temperature bearings
- Extra large size bearings for steel plants and heavy industries.
- Impact load resistant bearings



## TAPERED ROLLER BEARINGS

- Single Row
- Double Row
- Four Row tapered roller bearings
- Matched Bearings



## THRUST BEARINGS

- Ball Thrust bearings : single & double direction.
- Angular Contact Thrust bearings.
- Needle Roller & Cylindrical Roller Thrust bearings.
- Combined Ball Needle Thrust bearings.
- Spherical Roller Thrust Bearings.



## ROD ENDS

- Standard
- Maintenance free
- Various thread sizes & shapes



## NEEDLE ROLLER BEARINGS

- Shell Type
- Machined Type
- Roller Bearings
- Thrust Bearings
- Combined Type
- Crossed Roller Bearings
- Inner Rings
- Self Aligning
- Needle Cages
- Flat Cages
- Special Purpose Needle Bearings
- Precision Needle Bearings
- Full complement Bearings



## CAM FOLLOWERS - ROLLER FOLLOWERS

- Full range of standard and non-standard types.
- Customized Manufacturing
- Special manufacturing as per design.



## CAM CLUTCHES & UNIDIRECTION BEARINGS

- One way ball bearings.
- Sprag freewheels
- One way clutch with ball bearing and sprag
- Sprag freewheels : DC cage & Race type
- Roller freewheels
- Centrifugal lift-off sprag type freewheels with the inner race rotating
- With key ways on inner or outer or both.
- Bearing supported & non bearing supported

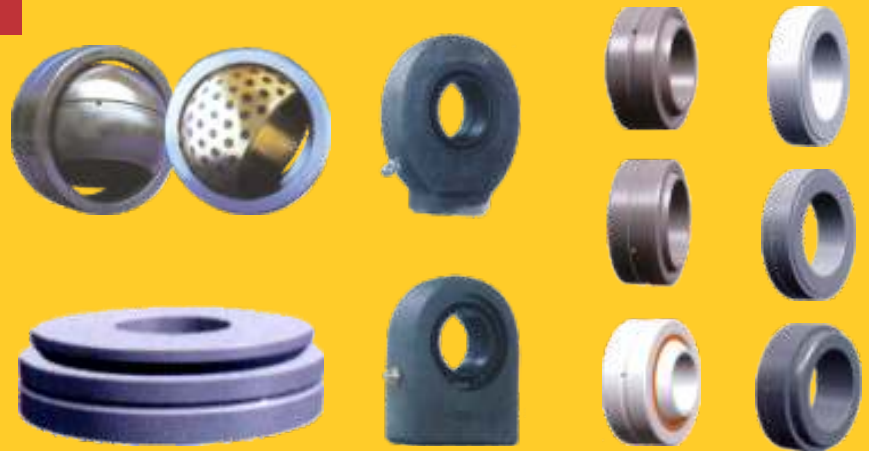


## SPHERICAL PLAIN BEARINGS

- Radial spherical plain bearings
- Angular contact spherical plain bearings
- Spherical plain thrust bearings
- With rod end type housings

### Sliding contact surfaces:

- Steel / Steel - Steel / Bronze
- Steel / Ptfе Fabric - Steel / Zinc base alloy



## MIKI PULLEY COUPLINGS



## PLUMMER BLOCKS / SLEEVES

- Standard & as per design



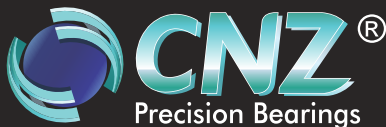
Stockists, Authorised Distributors, Certified importers for:



**HIWIN®**

**NSK·RHP**

**FAG**



**Koyo®**

**NACHI**

**NMB**

**NTN IKO FYH THK IJK ZKL**



## PILLOW BLOCK BEARINGS

- Self lube pillow blocks
- Triple lip
- Seal pillow blocks
- Pressed Sheet Metal Housing Type
- Non Metallic Housing Type
- Stainless Steel units
- Non-Metallic Units



## STAINLESS STEEL BEARINGS

- For anti-corrosive applications
- All types of bearings & assemblies
- For high or low temperatures



## SPECIAL PURPOSE BEARINGS

For following applications

- ⦿ Conveyer Bearings
- ⦿ Trolley Bearings
- ⦿ Textile Bearings
- ⦿ Furniture bearings
- ⦿ .....and up to your imaginations



## LINEAR MOTION BUSH

- ⦿ Standard - Adjustable-Open - Extra long
- ⦿ Pressed Steel outer
- ⦿ With mounting flange and many more
- ⦿ Linear motion ball bearings slide units
- ⦿ Support rail units
- ⦿ Shaft supports



## LINEAR GUIDE BARS (LINERS SHAFTS/SIDE SHAFTS)

Case hardened, Ground, Polished, Chrome-plated, High precision quality with reference to - Straightness, roundness, Sylindericity, Surface finish and hardness can be made as per drawings with

- ⦿ Radial Holes (Drilling & Tapping)
- ⦿ Co-Axial holes (Drilling & Tapping)
- ⦿ Snap Ring Grooves
- ⦿ Threadings
- ⦿ Key Ways
- ⦿ Slots



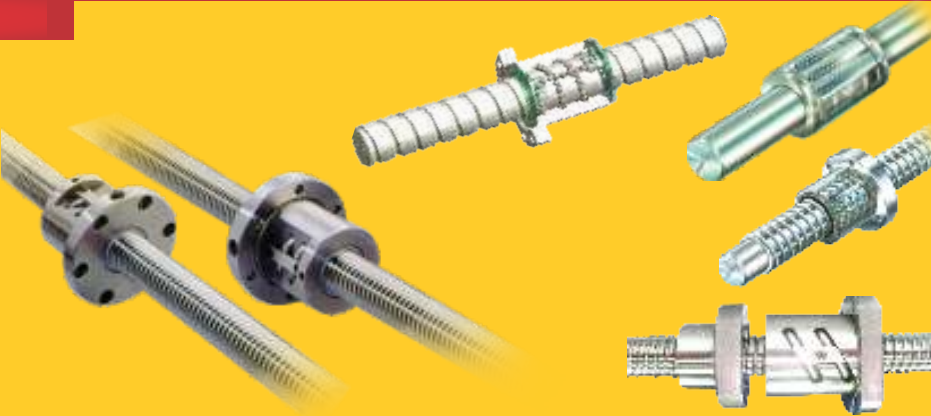
## LINEAR MOTION ROLLING GUIDES

- Standard - Crossed roller way units
- High rigidity precision linear slide units



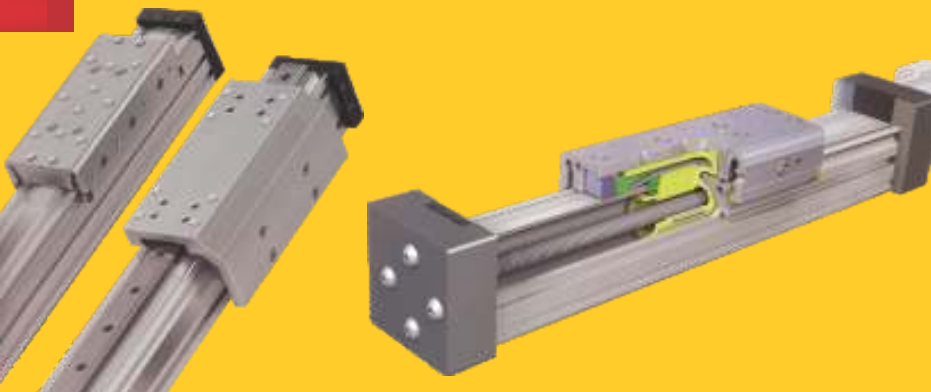
## BALL SCREWS

- Standard ball screw assembly ( With Preloaded & Non-Preloaded type nuts )
- Rotary ball screws
- Ball screw splines



## ELECTRIC LINEAR ACTUATORS

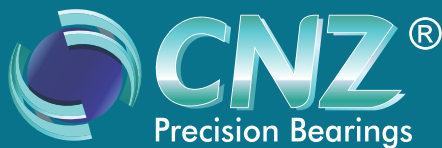
- Solid Bearing
- Profile Rail





## LUBRICATION FREE AND MARGINALLY LUBRICATED BUSH

- Dry - Self lubricating - Composit
- Boundary lubricating
- Bi-metal
- Oil retaining sintered bearings



Distributors : Collective Trade Links Pvt. Ltd.



# SLEWING RINGS

Geared and without Gear bearings for :

- Excavators
- Loaders
- Mobile cranes
- Fire ladders
- Concrete pumps
- Rotary and Turn Table Bearing
- Many other applications



**Distributors : Collective Trade Links Pvt. Ltd.**



**collective**

**Creating the Friction free world**



AN ISO 9001-2008 COMPANY



17, Aaryan Corporate Park, Nr. Thaltej Railway Crossing, Thaltej, Ahmedabad-380054. Gujarat, INDIA

Phone Number: +91 79 26474700 (30 Lines) Fax no:- +91 79 26474735

E-mail: [sales@collectivebearings.com](mailto:sales@collectivebearings.com), [info@collectivebearings.com](mailto:info@collectivebearings.com) Website: [www.collectivebearings.com](http://www.collectivebearings.com)